

DESCRIPTION

6" Slope Gimbal trim with integrated LED power supply and thermal management system designed to fit most standard 6" slope recessed cans.

SPECIFICATIONS

Construction:

- Durable thermoplastic and aluminum construction
- E26 medium screw-base Edison connector provides easy retrofit of incandescent housings

Optics/ LEDs:

- Long-life LEDs with up to 50,000 hours at 70% lumen maintenance
- Choice of 2700K (±145), 3500K (±245), or 4000K (±275) color temperature with 80 CRI
- Produces 975 lumens (2700K) and 1050 lumens (4000K)
- Uses high power, high quality LEDs

Electrical:

- LED driver dimmable down to 10% with most dimmers (Lutron Maestro C-L/MACL-153MR, Lutron Skylark C-L/SCL-153P, Leviton Sureslide/Cat. No.6674, Lutron/PD-6WCL, Legrand Harmony/HCL453PTCCCV6)
- Save 75% compared to incandescent sources
- Power factor ≥.90
- 120V, 50/60Hz
- 13W power consumption
- Operation temperature of -20°C-40°C (-4°F-104°F)

Installation:

- Compatible with most 6" housings
- Compatible with insulated, non-insulated, and air-tight ceiling
- Easy installation with adjustable torsion spring
- Torsion spring is designed to fit into 6" housing automatically without changing mounting tab
- No tools required for installation box

Testing & Compliance:

- Tested in accordance with IESNA LM79 & LM80
- ETL Listed for Damp Locations
- Energy Star Qualified
- Passes FCC Class B
- Meets state of California Title 24 requirements

Warranty:

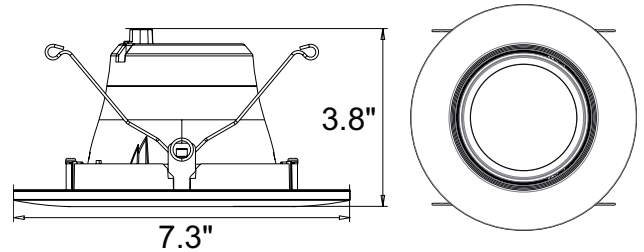
- Five (5) year warranty (terms and conditions apply)

Note: Environment and application will affect actual performance. Typical values and 25°C used for testing. Specifications subject to change without notice.

Model: _____ Date: _____
 Accessories: _____
 Job Name: _____ Type: _____



Dimensions



Ordering Information

SKUs	Description
BRK-LED56-SGR-27K-ECO	6" LED Slope Ceiling Gimbal Trim, 2700K CCT
BRK-LED56-SGR-35K-ECO	6" LED Slope Ceiling Gimbal Trim, 3500K CCT
BRK-LED56-SGR-4K-ECO	6" LED Slope Ceiling Gimbal Trim, 4000K CCT