

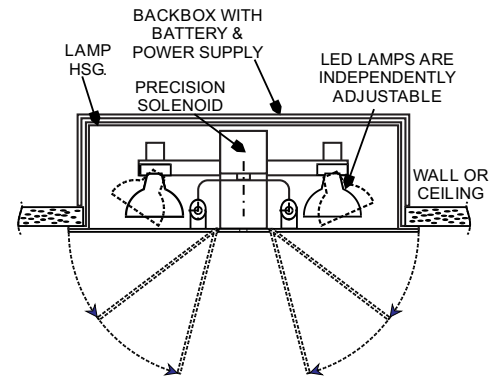
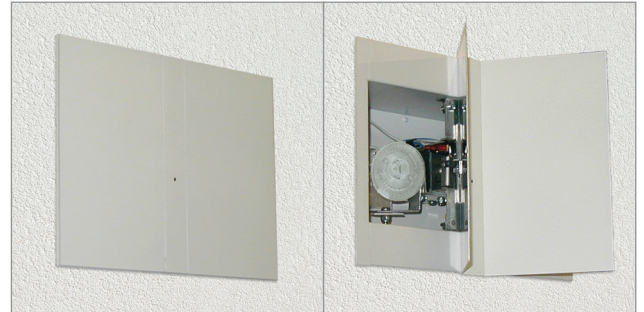
**FEATURES**

- Following AC power failure, cover doors open instantly and provide emergency lighting to area required with automatic retraction when AC power is restored
- Doors are operated automatically using a spring and solenoid system with a magnetic latch for years of worry free operation
- Flush fitting cover doors feature internal reflective surfaces to maximize light output
- Cover doors may be field color matched, textured or even wall papered to blend into any interior - When closed in normal-mode, the unit is almost invisible
- Dual 2 x 9W MR16 LED lamps available (18W total) - Lamp life of 60,000 hours means most installations will never require replacement
- Swivel mounted lamps are fully adjustable and lock into the desired position
- Guardian Self-test/Self-diagnostics (G2) standard
- Maintenance-free lead calcium battery
- Optional NiCad batteries available
- 120/277VAC input
- Optional Damp Rating available
- Remote Test Panel
- Universal wall or ceiling mount
- Assembled in the U.S.A.

**WARRANTY**

Any component that fails due to a manufacturing defect is guaranteed for three years with a separate three year pro-rated warranty on the battery. The warranty does not cover physical damage, abuse or instances of uncontrollable natural forces. See the full Exitronix warranty document for detailed information.

Model: \_\_\_\_\_ Date: \_\_\_\_\_  
 Accessories: \_\_\_\_\_  
 Job Name: \_\_\_\_\_ Type: \_\_\_\_\_



**ORDERING INFORMATION Example: S-NC-18-2-DR**

Series	Power	Wattage	Battery Run Time	Options (Factory Installed)
S = Stealth	NC = NiCad	18 <sup>1</sup> = 9 Watts x 2	2 = 2 Hour	CC = Custom Color
	WB = Sealed Lead Calcium		Blank = 90 Min	DR = Damp Location Rated

**Notes**

<sup>1</sup> 18W unit provided with 2 12V, 9W MR16 LED Lamps

<sup>2</sup> Order as separate line item

**Accessories<sup>2</sup>** (Field Installed)

RTP = Remote Test Panel

## CONSTRUCTION

The Stealth LED Series is constructed of a galvanized steel back box with aluminum doors and lamp housing. Doors are operated automatically using a spring and solenoid system with a magnetic latch for years of worry-free operation.

## ILLUMINATION

Illumination of the Stealth LED Series is accomplished utilizing two high-intensity, long-life fully adjustable 2 x 12V/9W MR16 LED lamps. Metalized reflectors deliver maximum light to total path of egress and 60,000 hours of lamp life.

## ELECTRICAL

### Input

Dual-voltage input 120/277VAC

### Sealed Nickel Cadmium Battery - NiCad (NC)

Exitronix nickel cadmium batteries are maintenance-free which offers high discharge rates and continues to perform in a vast temperature range from 32°F to 104°F (0°C to 40°C).

### Sealed Lead Calcium Battery (WB)

Exitronix sealed lead calcium batteries are maintenance-free with a life expectancy of five years. Lead calcium batteries perform optimally in temperatures ranging from 59°F to 104°F (15°C to 40°C).

### Guardian Self-test/Self-diagnostics (Standard)

The Guardian circuit continuously monitors the operating condition of the AC power, battery supply voltage, emergency lamp continuity and charging circuit.

The purpose of this option is to provide visual signaling in response to a fault at the emergency units battery and/or battery charger. If a failure is detected, visual status will occur immediately via the multicolor LED. The LED will remain in this state until the fault is corrected.

The Guardian circuit also monitors the transfer circuit as well as performing automatic code compliant testing. The Guardian circuit will perform a discharge and self-tests in accordance to NPPA101 specifications.

## OPTIONS

### Remote Test Panel (Accessory RTP)

Diagnostic display by multicolor LED or full function alpha numeric display.

### Damp Location Rated (Option DR)

Damp Location Rated fixture that is normally or periodically subject to condensation of moisture in, on or adjacent to, and includes partially protected locations.

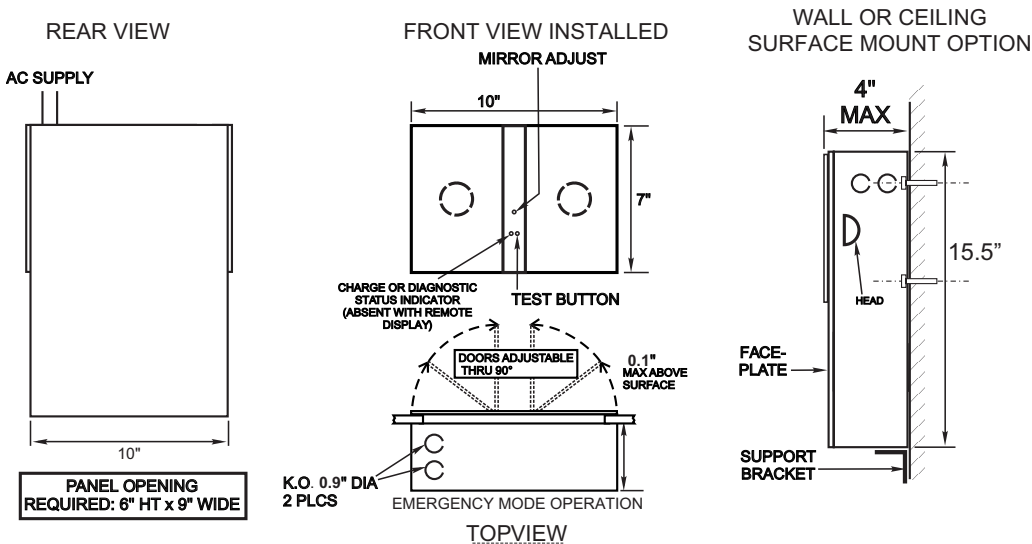
### Assembled in the USA (STANDARD)

Many of our products can be produced or transformed to comply with the American Recovery and Reinvestment Act of 2009 (ARRA) requirements and Buy American provisions.

### CONFORMANCE TO CODES & STANDARDS

The Stealth LED Series is ETL listed and meets or exceeds the following: UL 924, NEC requirements and NFPA 101.

## MOUNTING DATA AND DIMENSIONS



Specifications are subject to change without notice. Installation must be performed in accordance with Barron Lighting Group installation instructions.

10800091 Rev-12 07/18